

Date		Type	
Specifier		Project Name	

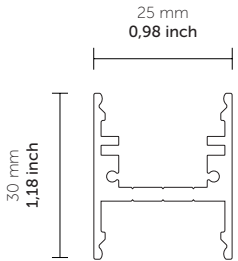
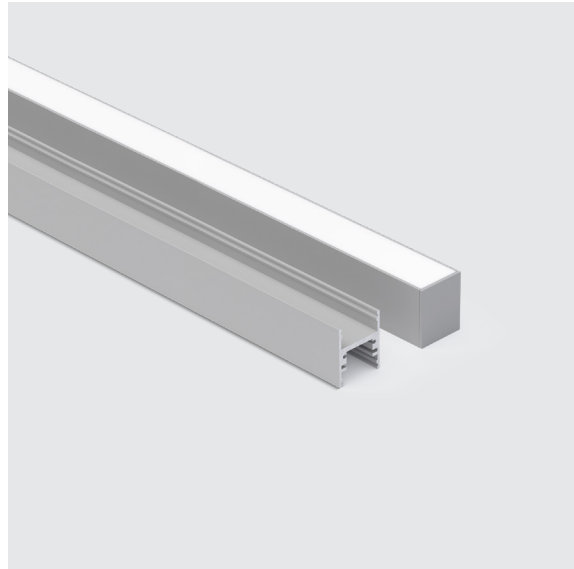


LINE 058

Design: QUATTROBI TECHNICAL DEPARTMENT

H-profile ideal for creating thin light lines, even in the bi-emission version, with the possibility of having a good light output. The accessories allow suspension and wall installation in the bi-emission version, recessed and ceiling-mounted in the mono-emission version. The various types of covers available allow the creation of different lighting effects according to the design requirements.

Wattages here below to be considered per 3 feet.



PRODUCT FEATURES

Power (W)	10 - 14
Lens	TR Transparent - OP Opal - OR Round Opal - OS Square Opal
Installation	Suspended, Recessed, Ceiling, Wall
Luminaire housing	Extruded aluminum
Light sources	LED
Finishing	White, Black, Aluminum
Power supply	Remote driver
Dimming	on-off, 0-10V

For dry location

Specification recap

Type	Item #	Quantity

*Please make sure to include fixture and any accessories.

LINE 058

Design: QUATTROBI TECHNICAL DEPARTMENT



Ordering info

Model	M/S	Length	Cri/Color	Lens	Driver/dimmer	Finish
-----	-		----	--	-	--
L5810 10W / 1m (3') L5814 14W / 1m (3')	M S	5" - 127 mm 011" - 279 mm 022" - 559 mm 094" - 2388 mm 190" - 4826 mm	8030 80CRI/3000K 8040 80CRI/4000K 9027 90CRI/2700K 9030 90CRI/3000K 9035 90CRI/3500K 9040 90CRI/4000K	TR Trasparent OP Opal OR Round Opal OS Square Opal	0 on-off A 0-10V	01 white 02 black 33 aluminum

Ordering example: **L5810 M 8030 TR 0 01**

Accessories

MATVA00258
Bracket for plasterboard



MATVA00158
Steel fixing clip



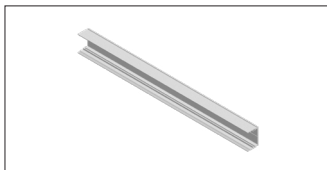
MATVA00858
Linear joint



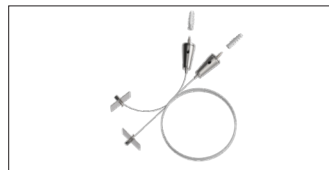
MATVA00958
Angular joint



MATVA00458
Applique kit



MATVA00758
Suspension kit



MATVA00721
Wiring square rosette

