

Date

Specifier

Type

Project Name



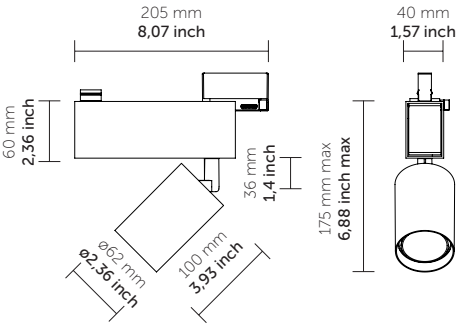
INNER

Design: QUATTROBI TECHNICAL DEPARTMENT

Track adjustable projector with LED lighting system. Optical unit. Complete with electronic driver. Suitable for indoor applications such as retail stores, museums and art galleries.



Lisitings: c US LISTED



0° - 90° vertical tilting / 355° horizontal rotation

PRODUCT FEATURES

Type:	Track
Applications:	Indoor
Luminaire material:	Drawn aluminium
Light source:	LED
Power Supply:	Electronic constant current LED driver, 120V 60Hz
Wattage:	15, 22
Delivered lumens:	1085 lm - 2367 lm
Color Temp:	2700K, 3000K, 3500K, 4000K
CRI:	80+, 90+, CRIMAX, F90
Dimming:	Phase cut dimming

Specification recap

Type	Item #	Quantity

*Please make sure to include fixture and any accessories.

Ordering info

Model	Adapter	Cri/Color	Beam	Finish
-----	-	----	-	--
IN005 15W120V IN007 22W120V	X Global(*) XTS compatible	8030 80CRI/3000K 8035 80CRI/3500K 8040 80CRI/4000K 9027 90CRI/2700K 9030 90CRI/3000K 9035 90CRI/3500K 9730 97CRI/3000K CR27 CRIMAX/2700K CR30 CRIMAX/3000K CR35 CRIMAX/3500K CR40 CRIMAX/4000K F930 F90CRI/3000K F935 F90CRI/3500K F940 F90CRI/4000K Decor versions and other on request	S Spot M Medium W Wide Other on request	01 white 02 black 18 grey Other on request

Ordering example :**IN005 G 8030 M 01***For other CRI, KELVIN and other customization please contact the cunsomer service

(*) Global is a registered trade mark of Nordic Aluminium

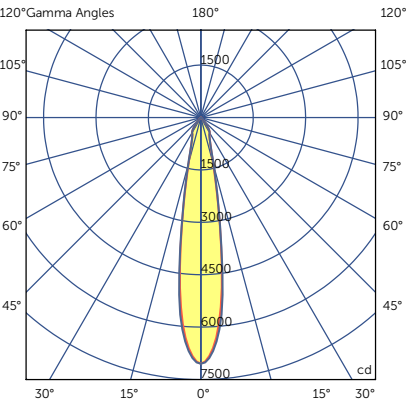
Multiplying factors: (Multiplying Factor is based on 80CRI/3000K)

CCT	80CRI/3000K	80CRI/3500K	80CRI/4000K	90CRI/3000K
Factor	1.0	1,035	1,053	0,847

Wattage	15W	22W
Factor	1.0	1.426

Photometry

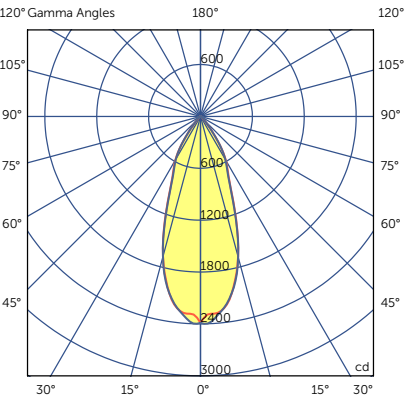
8030 S 15W 3000K CRI84 19°
Lumens: 1575



Candelas at Nadir

Deg	Candela
0	7045.17
5	5927.59
15	1363.66
25	580.57
35	376.35
45	14.20

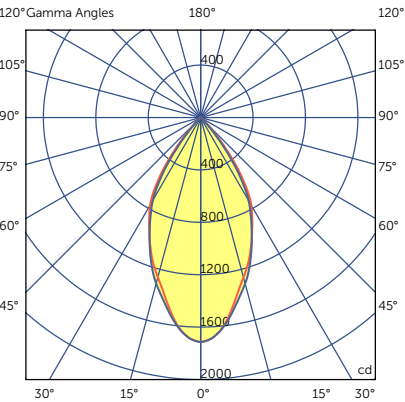
8030 M 15W 3000K CRI84 38°
Lumens: 1575



Candelas at Nadir

Deg	Candela
0	2386.64
5	2279.58
15	1677.78
25	768.36
35	347.27
45	48.89

8030 W 15W 3000K CRI84 55°
Lumens: 1575



Candelas at Nadir

Deg	Candela
0	1713.60
5	1639.58
15	1262.52
25	930.98
35	535.50
45	67.35

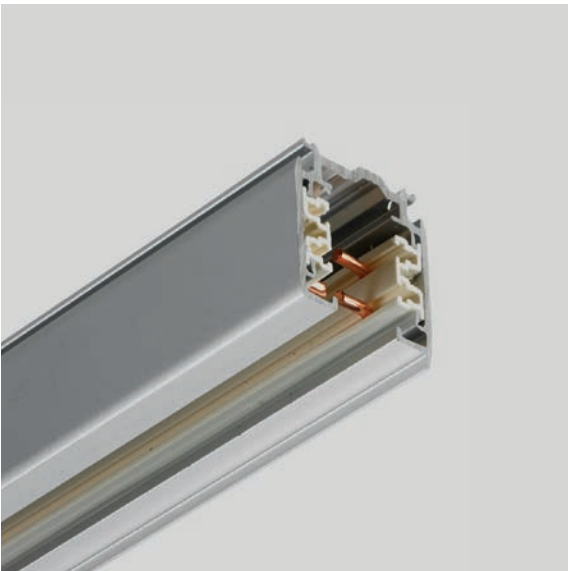
Date		Type	
Specifier		Project Name	



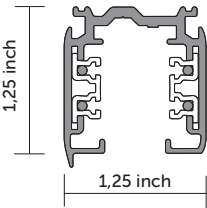
TRACK 3 circuit 120V

Design: GLOBAL

Lighting track system
Low profile , modular system
High power handling capability



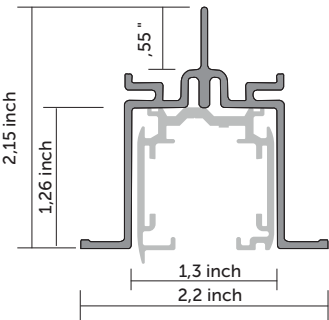
Lisittings: c US LISTED



XTS

PRODUCT FEATURES

Installation	Suspended / Surface / Recessed
Luminaire housing	Extruded aluminum
Finishing	White, Grey, Black



FTP

Ordering info

Model	Length	Finish	Model	Length	Finish
-----		--	-----		--
XTS44 XTS48 XTS412	4'(48") 8(96") 12'(144")	1 aluminium 2 black 3 white	FTP44 FTP48 FTP412	4'(48") 8(96") 12'(144")	1 aluminium 2 black 3 white

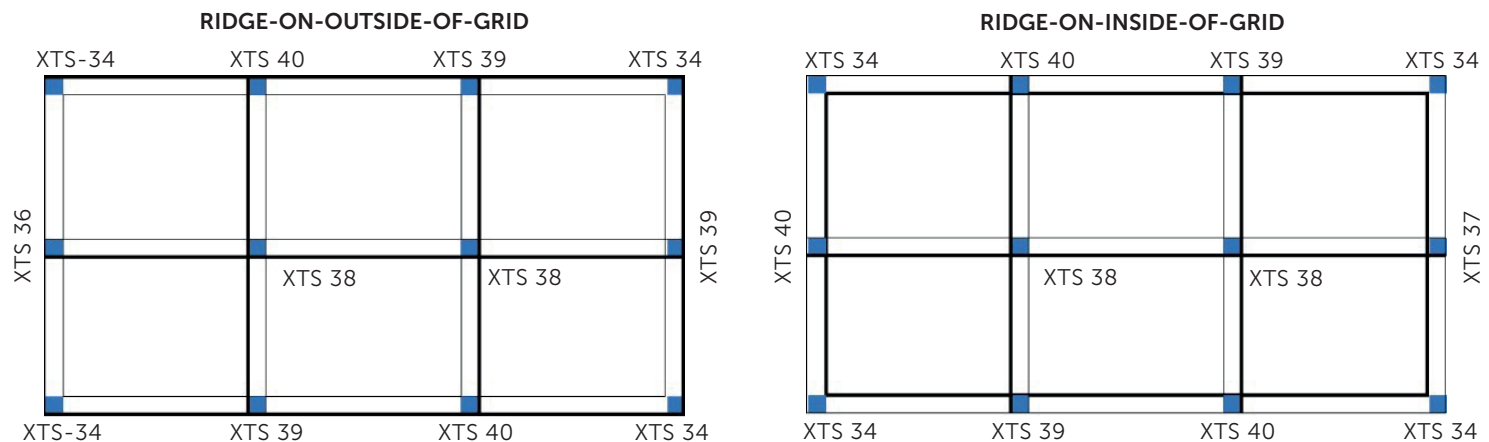
Ordering example: suspended / surface **XTS44 1**

Ordering example: recessed **XTS44 1 + FTP44 2**

*Please make sure to include fixture and any accessories.



Accessory wiring diagram



Components

Model	Finish	Additional Accessories
-----	--	
XTS11 end feed left XTS12 end feed right XTS14 center feed XTS21 straight connector XTS23 flexible connector XTS34 L connector adjustable XTS38 X connector XTS39 T connector inside XTS40 T connector outside XTS41 dead end SKB30 ceiling cup GA70 monopoint kit FTP41 Recessed end cup	1 aluminium 2 black 3 white	XTSV12-1 bending tool SKB12-1 ceiling clamp SKB34 suspension wire 5 feet SKB34/3 suspension wire 9 feet

Ordering example: **XTS11 2**