

Date	<input type="text"/>	Type	<input type="text"/>
Specifier	<input type="text"/>	Project Name	<input type="text"/>



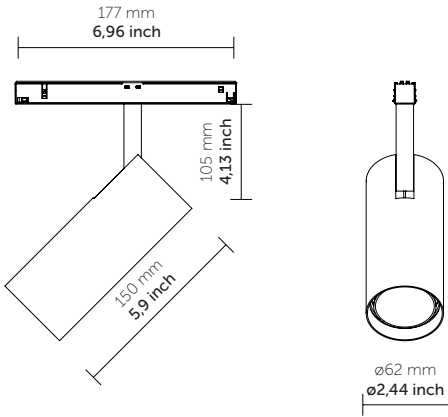
EMA 01 150

Design: QUATTROBI TECHNICAL DEPARTMENT

EMA: eco magnetic

Led track light projector with magnetic fastening system.

Listings: US LISTED



PRODUCT FEATURES

Type:	Track
Applications:	Indoor
Luminaire material:	Aluminium alloys
Protective screen:	Polycarbonate
Light source:	LED
Power Supply:	DC/DC led driver integrated
Wattage:	20
Delivered lumens:	1548 lm - 2367 lm
Color Temp:	2700K, 3000K, 3500K, 4000K
CRI:	80+, 90+, CRIMAX, F90
Dimming:	0/1-10V dim

For all track type

Specification recap

Type	Item #	Quantity

*Please make sure to include fixture and any accessories.

EMA 01 150

Design: QUATTROBI TECHNICAL DEPARTMENT



Ordering info

Model	Adapter	Cri/Color	Beam	Dimming	Finish
-----	--	----	-		--
M1501 20W	KB Serie 9500 EVO compatible (***)	8030 80CRI/3000K 8035 80CRI/3500K 8040 80CRI/4000K 9027 90CRI/2700K 9030 90CRI/3000K 9035 90CRI/3500K 9730 97CRI/3000K CR27 CRIMAX/2700K CR30 CRIMAX/3000K CR35 CRIMAX/3500K CR40 CRIMAX/4000K F930 F90CRI/3000K F935 F90CRI/3500K F940 F90CRI/4000K Decor Version and other on request	S Spot M Medium W Wide Other on request	1. On/off A 0-10V (°) D Dali	01 white 02 black Other on request

*For other CRI, KELVIN and other customization please contact the customer service

Ordering example : **M1501 KB 8030 M A 01**

(**) adapter for Multisystem Evo 9500 series installable only in class 2 circuit

(***) adapter for Multisystem Evo 9500 series, Installable in isolated Low voltage circuits and in Class2 circuit

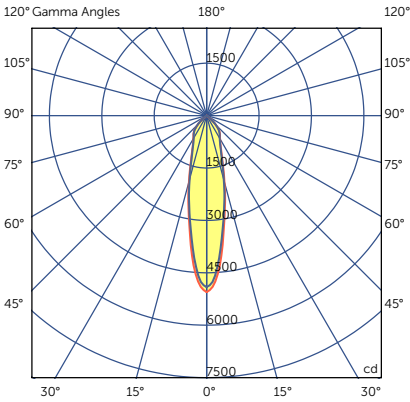
Multiplying factors: (Multiplying Factor is based on 80CRI/3000K)

CCT	80CRI/3000K	80CRI/3500K	80CRI/4000K	90CRI/3000K
Factor	1.0	1,035	1,053	0,847

Wattage	15W	20W
Factor	1.0	1.426

Photometry

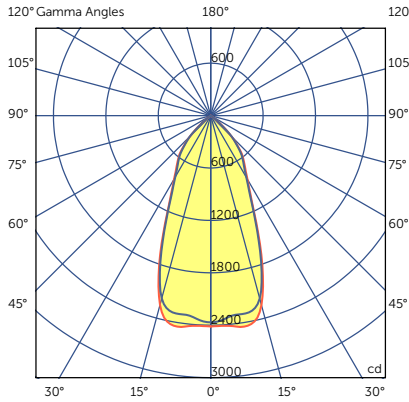
8030 S 15W 3000K CRI84 19°
Lumens: 2171



Candelas at Nadir

Deg	Candela
0	5049.32
5	4028.14
15	1799.25
25	892.52
35	642.19
45	292.84

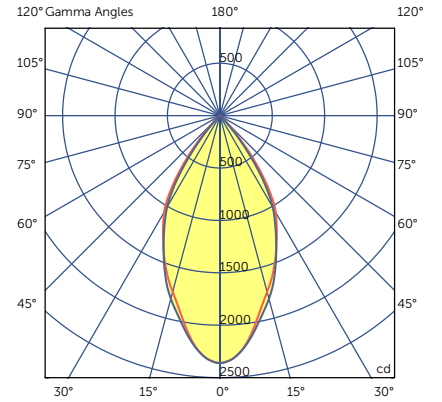
8030 M 15W 3000K CRI84 38°
Lumens: 2171



Candelas at Nadir

Deg	Candela
0	2413.03
5	2422.68
15	2149.83
25	1062.99
35	645.14
45	292.84

8030 W 15W 3000K CRI84 55°
Lumens: 2171



Candelas at Nadir

Deg	Candela
0	2362.05
5	2260.01
15	1740.27
25	1283.28
35	699.71
45	92.83

Date	<input type="text"/>	Type	<input type="text"/>
Specifier	<input type="text"/>	Project Name	<input type="text"/>



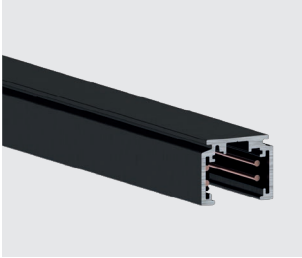
EMA TRACK

Led track light projector with magnetic fastening system.

PRODUCT FEATURES

Installation	Suspended / Surface / Recessed
Track housing	Extruded aluminum
Finishing	White, Black

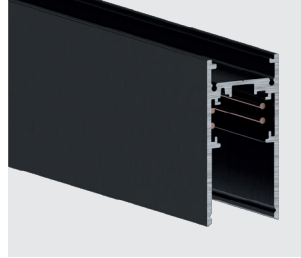
ST1: Surface



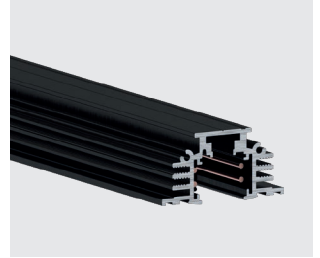
ST1 Curved: Surface



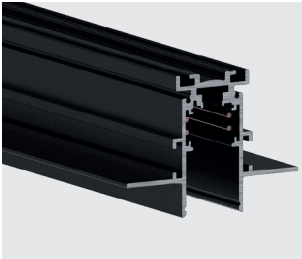
ST2: Suspended



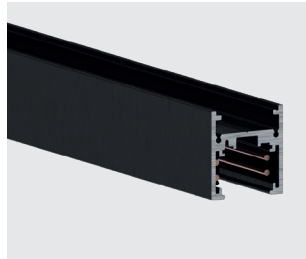
ST3: Recessed



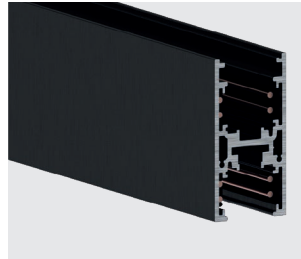
ST5: Recessed



ST6: Suspended



ST7: Suspended



ST8: Recessed



ST9: Suspended



ST10: Recessed



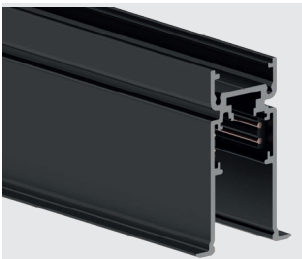
ST13: Recessed



ST15 Round: Surface



ST18: Recessed



Ordering info

Model	Length	Finish	Version
----		--	----
A9500	-1/ 39,37" (1 mt.) -2/ 78,74" (2 mt.) -3/ 118,1" (3mt.)	B black W white	-ST1 -ST2 -ST3 (black color only) -ST5 (black color only) -ST6 -ST7 -ST8 -ST9 -ST13 -ST15 -ST18
	-4' / 1219,2 mm -8' / 2438,4 mm in request		

For dry location Class2

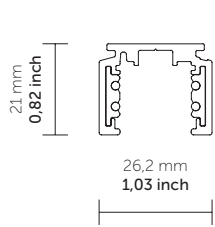
(*) Track Multisystem 9500 series

Quattrobi Inc. 2003 NW Royal Fern CT, Palm City, FL 34990 +1.347.613.5772 info@quattrobi.net

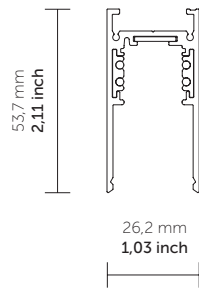
Due to the dynamic nature of lighting products and the associated technologies, luminaire data on this sheet is subject to change at the discretion of Quattrobi Inc.

© copyright Quattrobi Inc 2024

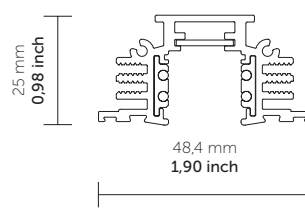
ST1: Surface



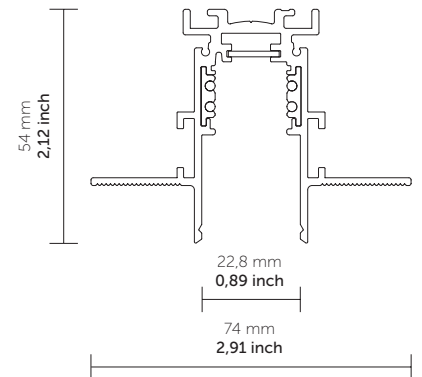
ST2: Suspended



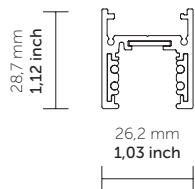
ST3: Recessed



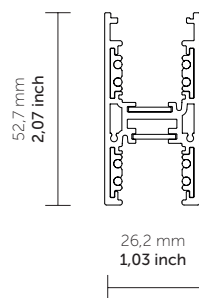
ST5: Recessed



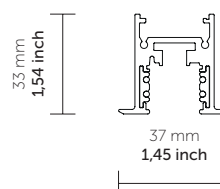
ST6: Suspended



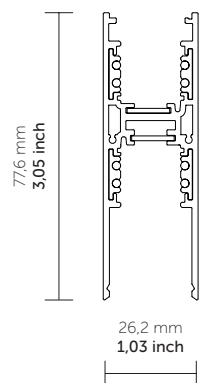
ST7: Suspended



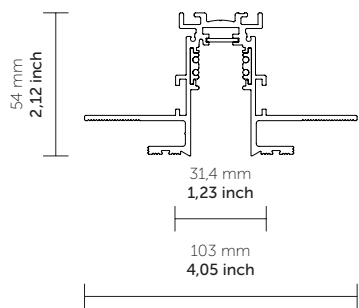
ST8: Recessed



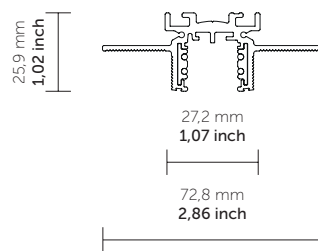
ST9: Suspended



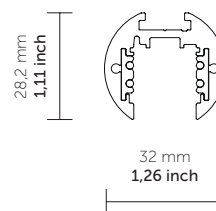
ST10: Recessed



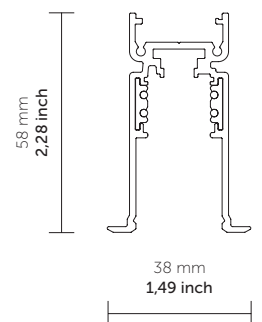
ST13: Recessed



ST15 Round: Surface



ST18: Recessed



All power supplies:

M 040 48 12 - 40 Watt

M 080 48 12 - 80 Watt

M 150 48 12 - 150 Watt

M 185 48 12 - 185 Watt

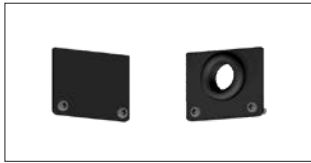
M 320 48 12 - 320 Watt

Remote Driver, input voltage 120V 60Hz , output class2 48V DC 2Amps

Accessories

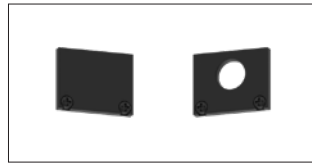
For Track: **ST1 - ST2 - ST3 - ST5 - ST6 - ST7 - ST8 - ST9 - ST10 - ST13 - ST15 - ST18**
 Available colours: **W** - white RAL 9010, **W2** - white RAL 9016, **B** - black RAL 9005

Painted metal body end caps



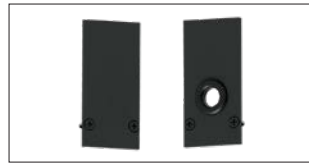
9504/ST1-...

Polycarbonate body end caps



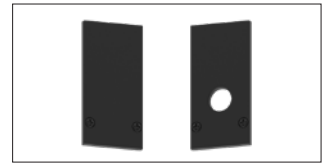
9504/ST1-P-...

Painted metal body end caps



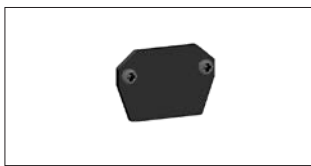
9504/ST2-...

Polycarbonate body end caps



9504/ST2-P-...

Painted metal body end cap



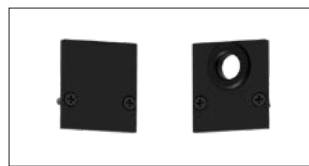
9504/ST3...

Template for 9500...ST5... Track



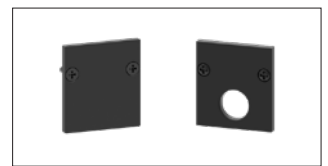
S-9500/D1-ST5

Painted metal body end caps



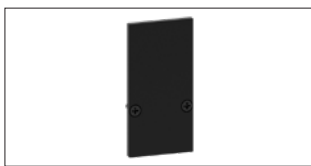
9504/ST6-...

Polycarbonate body end caps



9504/ST6-P-...

Painted metal body end cap



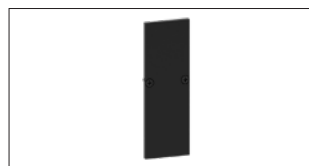
9504/ST7-...

Painted metal body end cap



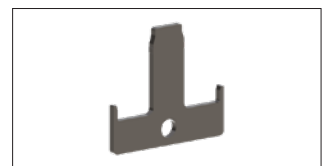
9504/ST8-...

Painted metal body end cap



9504/ST9-...

Template for 9500...ST10... Track



S-9500/D1-ST10

Template for 9500...ST13... Track



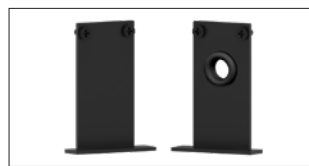
S-9500/D1-ST13

Polycarbonate body end cap



9504/ST15-P-...

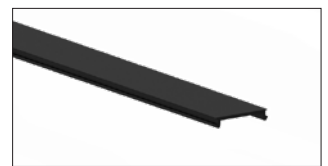
Painted metal body end caps



9504/ST18-...

Aesthetic track cover

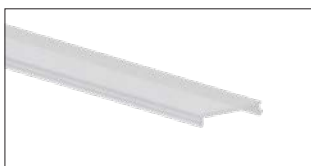
For: ST1, ST3, ST6, ST7, ST8, ST13



S-9500/SE-... (L: 3m)

Opal screen

For: ST1, ST3, ST6, ST7, ST8, ST13



S-9500/SE-OPN-3000 (L: 3m)

Fumè screen

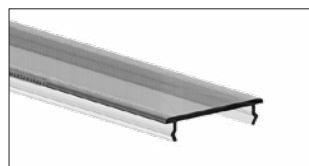
For: ST1, ST3, ST6, ST7, ST8, ST13



S-9500/SE-F-3000 (L: 3m)

Microprismatic screen TL=87%

For ST2, ST6



S-9500/MIC-3000 (L: 3m)

Opal screen TL=56%

For ST2, ST6



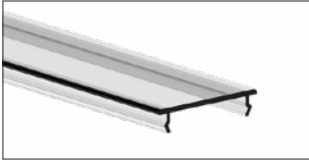
S-9500/SE-... (L: 3m)

Accessories

For Track: **ST1 - ST2 - ST3 - ST5 - ST6 - ST7 - ST8 - ST9 - ST10 - ST13 - ST15 - ST18**
Available colours: **W** - white RAL 9010, **W2** - white RAL 9016, **B** - black RAL 9005

Transparent screen TL=90%

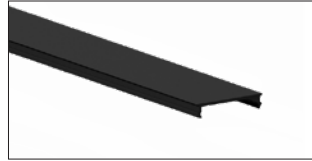
For ST2, ST6



S-9500/TR-3000 (L: 3m)

Aesthetic track cover

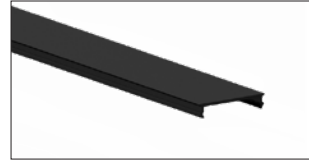
For:ST2, ST5, ST9



S-9500/LE-... (L: 3m)

Plaster installation guard

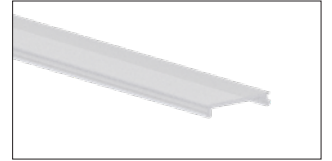
For: ST5



S-9500-L/B-... (L: 3m)

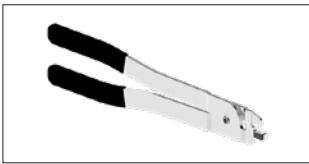
Opal screen

For: ST1, ST3, ST6, ST7, ST8, ST13



S-9500/SE-OPN-3000 (L: 3m)

Cutting tool for track
conductors



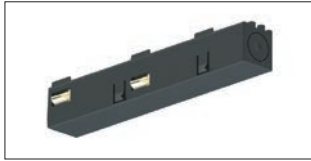
S-9000/T

Polarized connections

For Track: **ST1 - ST2 - ST3 - ST5 - ST6 - ST7 - ST8 - ST9 - ST10 - ST13 - ST15 - ST18**

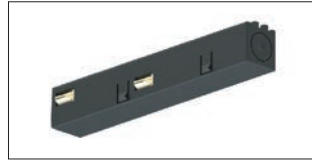
Available colours: **W** - white RAL 9010, **B** - black RAL 9005

Polycarbonate body end-feed-left



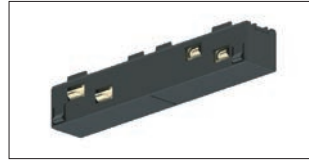
9501-S-KL/...-E

Polycarbonate body end-feed-right



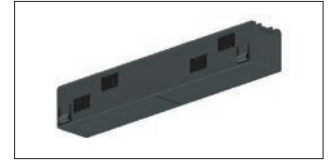
9501-S-KR/...-E

Polycarbonate body jointing connector



9503-S-K/...-E

Polycarbonate body mechanical jointing connector



9503-S/...-M-E

Polycarbonate body internal polarized L feed



9511-KI/...-E

Polycarbonate body external polarized L feed



9511-KE/...-E

Polycarbonate body polarized T-feed



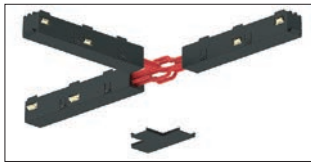
9513-K/...-E

Polycarbonate body polarized T-feed



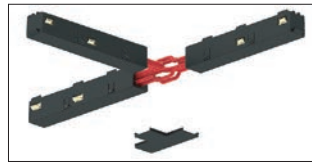
9514-K/...-E

Polycarbonate body polarized T-feed



9515-K/...-E

Polycarbonate body polarized T-feed



9516-K/...-E

Polycarbonate body polarized X-feed



9517-K/...-E

Polycarbonate body adjustable corner



9518-S-K/...-E

Track fixing accessories

For Track: **ST1 - ST2 - ST3 - ST5 - ST6 - ST7 - ST8 - ST9 - ST10 - ST13 - ST15 - ST18**
 Available colours: **W** - white RAL 9010, **W2** - white RAL 9016, **B** - black RAL 9005

Complete suspension kit

For: ST2, ST6, ST8



9500-KIT1-1,5
9500-KIT1-3
9500-KIT1-5

Complete suspension kit

For: ST2, ST6, ST8



9500-KIT2-1,5
9500-KIT2-3
9500-KIT2-5

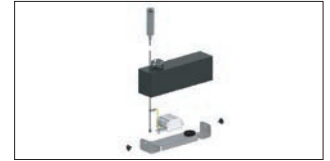
Suspension set

For: ST2, ST6, ST7, ST9, ST15



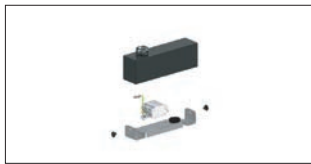
S-9000-P6-P-...

Set for ceiling mounting with cup and terminal block



SET-RS/...-3

Set for ceiling mounting with cup and terminal block



SET-RS/...

Suspension set

For: ST2, ST6, ST7, ST9, ST15



S-9000-P3-...

Set for ceiling mounting with cup and terminal block

For: ST2, ST6, ST7, ST9, ST15



S-9000-P5-...

Suspension set

For: ST2, ST6, ST7, ST8, ST9, ST15



S-9000-P6-S-...

Suspension set

For: ST5, ST8, ST10



S-9000-P4

Ceiling clamp

For: ST2, ST6



S-9500/114-...

Track fast fixing clamp with gripper

For: ST2, ST6, ST7, ST8, ST9



S-9500/114-T-...

Track fast fixing clamp

For: ST2, ST6, ST7, ST8, ST9



S-9500/115-...

Clamp with m6 gripper

For: ST5, ST10, ST13



S-9000-P2/117

Fast fixing clamp with m6 threaded gripper

For: ST5, ST10, ST13



S-9000/118-...

Recessed clamp

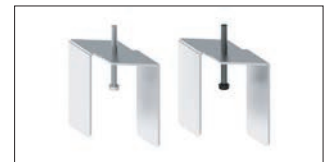
For: ST8



S-9500/111-...

Recessed clamp

For: ST18



S-9500/112-...

Short pendant bracket for suspensions

For: ST1



S-9500/312-LA-...

Bracket for "in row" use junction

For: ST1



S-9500/322-LA-...

Short pendant bracket for suspensions

For: ST1



S-9500/312-SV-...

Bracket for "in row" use junction

For: ST1



S-9500/322-SV-...

Track fixing accessories



For Track: **ST1 - ST2 - ST3 - ST5 - ST6 - ST7 - ST8 - ST9 - ST10 - ST13 - ST15 - ST18**

Available colours: **W** - white RAL 9010, **W2** - white RAL 9016, **B** - black RAL 9005

Short pendant bracket for suspensions

For: ST2, ST6, ST8



S-9500/313-LA

Bracket for "in row" use junction

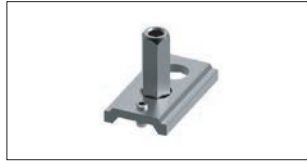
For: ST2, ST6, ST8



S-9500/323-LA

Short pendant bracket for suspensions

For: ST2, ST6, ST8



S-9500/313-M6

Bracket for "in row" use junction

For: ST2, ST6, ST8



S-9500/323-M6

Short pendant bracket for suspensions

For: ST2, ST6, ST8



S-9500/313-M13

Bracket for "in row" use junction

For: ST2, ST6, ST8



S-9500/323-M13

Set for ceiling mounting with cup and terminal block

For: ST2, ST6, ST7, ST9, ST15



S-9500/313-SV

Bracket for "in row" use junction

For: ST2, ST6, ST8



S-9500/323-SV

Reinforcing bracket for trimless use of jointing connector

For: ST3, ST5, ST7, ST9, ST10, ST15



S-9500/314-...

Bracket for trimless use

For: ST2



S-9500/315

Short pendant bracket for suspensions

For: ST7, ST9



S-9500/317-LA

Short pendant bracket for suspensions

For: ST7, ST9



S-9500/317-M6

Short pendant bracket for suspensions

For: ST7, ST9



S-9500/317-M13

Short pendant bracket for suspensions

For: ST7, ST9



S-9500/317-SV

Short pendant bracket for suspensions with m6 gripper



S-9000/312-M6-...

Bracket with m6 gripper for "in row" use junction



S-9000/322-M6-...

Short pendant bracket for suspensions

For: ST5



S-9500/314-LA-...

Short pendant bracket for suspensions

For: ST5



S-9500/314-M6-...

Short pendant bracket for suspensions

For: ST1



S-9500/312-SV-...

Bracket for "in row" use junction

For: ST1



S-9500/322-SV-...

Track fixing accessories

For Track: **ST1 - ST2 - ST3 - ST5 - ST6 - ST7 - ST8 - ST9 - ST10 - ST13 - ST15 - ST18**

Available colours: **W** - white RAL 9010, **W2** - white RAL 9016, **B** - black RAL 9005

Plastic cup for steel cable ø 1.5 mm



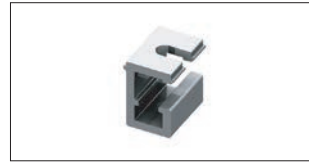
S-9000/3-...

Round head ceiling attachment



S-9000/216-...

Ceiling bracket for suspensions



S-9000/132

Hook with fixing hole (ø13mm) for stem



S-9000/232

Steel cable



S-9000/211-1,5
S-9000/211-3
S-9000/211-5

Steel cable with spherical end



S-9000/211-S-1,5
S-9000/211-S-3
S-9000/211-S-5

Stem with m13x1 end and nut



S-9000-1,2/604-...

Automatic lock



S-9000/214

Screw gripper



S-9000/215

Automatic M5 gripper with side hole



S-9000/218

Automatic M5 gripper with side hole



S-9000/220

Set screw for gripper on the bracket



602/F

Toothed elastic washer M5a for round track



S-9000/601

For Track: **ST2 - ST3 - ST5 - ST6 - ST8 - ST9 - ST10 - ST18**
 Available colours: **W2** - white RAL 9016, **B** - black RAL 9005

Mechanical L-joint

For: ST2



S-9511/...-ST2

L Bracket for angles



S-9511/316-LA

Mechanical L-joint

For: ST2



S-9511/...-P-ST2

Mechanical T-joint

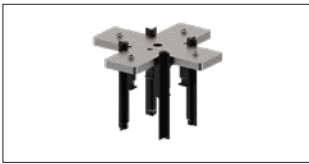
For: ST2



S-9513/...-P-ST2

Mechanical X-joint

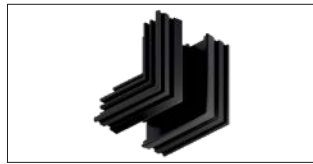
For ST2 track



S-9517/...-P-ST2

External vertical mechanical corner joint

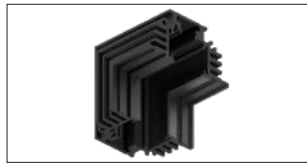
For: ST3



S-9511-E/...-ST3-E

Internal vertical mechanical corner joint

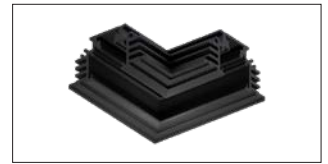
For: ST3



S-9511-I/...-ST3-E

Horizontal mechanical corner joint

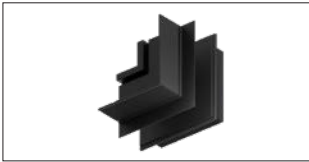
For: ST3



S-9511/...-ST3-E

External vertical mechanical corner joint

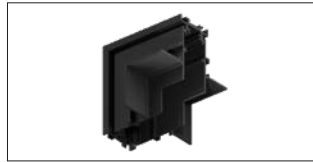
For: ST5



S-9511-E/...-ST5

Internal vertical mechanical corner joint

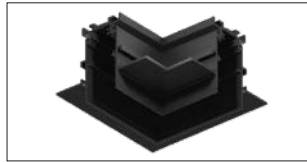
For: ST5



S-9511-I/...-ST5

Horizontal mechanical corner joint

For: ST5



S-9511/...-ST5

Mechanical I-joint

For: ST6



S-9511/...-ST6

Mechanical L-joint

For: ST6



S-9511/...-P-ST6

Mechanical T-joint

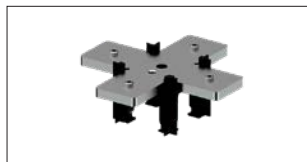
For: ST6



S-9513/...-P-ST6

Mechanical X-joint

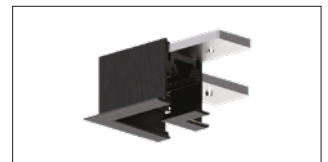
For: ST6



S-9517/...-P-ST6

Mechanical L-joint

For: ST8-E



S-9511/...-ST8-E

Mechanical L-joint

For: ST9



S-9511/...-P-ST9

Mechanical T-joint

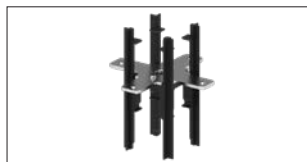
For: ST9



S-9513/...-P-ST9

Mechanical X-joint

For: ST9



S-9517/...-P-ST9

External vertical mechanical corner joint

For: ST10

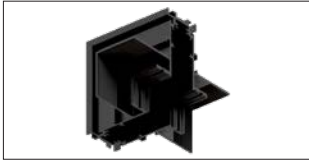


S-9511-E/...-ST10

Connection joinings accessories

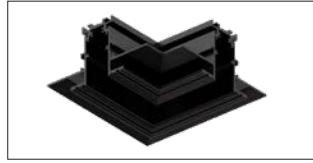
For Track: **ST2 - ST3 - ST5 - ST6 - ST8 - ST9 - ST10 - ST18**
Available colours: **W2** - white RAL 9016, **B** - black RAL 9005

Internal vertical mechanical
corner joint
For: ST10



S-9511-I/...-ST10

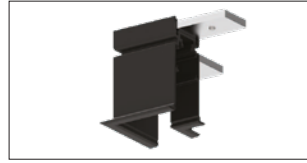
Horizontal mechanical corner
joint
For: ST10



S-9511/...-ST10

Mechanical l-joint

For: ST18-E



S-9511/...-P-ST2